

BenQ Europe B.V.
Meerenakkerweg 1-17
5652 AR Eindhoven
The Netherlands
Tel: +31 88 888 9200

BenQ Austria GmbH Central & Eastern Europe
Altmannsdorfer Strasse 89
Top 6 1120 Vienna
Austria
Tel: +43 1 60 39 100

BenQ Benelux B.V.
Meerenakkerweg 1-17
5652 AR Eindhoven
The Netherlands
Tel: +31 88 888 9200

BenQ Deutschland GmbH
Niederlassung Österreich Wehlistraße 27b / Stg. 2 /
Top 5 1200 Vienna
Austria
Tel: +43 190 7276 0

BenQ Deutschland GmbH
Essener Straße 5
46047 Oberhausen
Germany
Tel: +49 208 409 42 0

BenQ France SAS
92357 Le Plessis-Robinson
France
Tel: +33 0 1 7037 1717

BenQ Italy s.r.l.
Viale Ercole Marelli, 165
20099 Sesto San Giovanni (MI)
Italy
Tel: +39 02 36643741

BenQ Technology Iberica S.L.U.
Calle Constitucion, 3 (2-1)
08960 Sant Just Desvern
Spain
Tel: +34 93 556 0800

BenQ Nordic AB
Norgegatan 1, Box 1072
16432 Kista
Sweden
Tel: +46 8 588 98 804

BenQ Deutschland GmbH
Täferstrasse 32 5045,
Baden-Dättwil
Switzerland
Tel: +41 44 74399 99

BenQ UK Ltd.
3 Staplehurst Office Centre, Weston-on-the-Green,
Bicester Oxfordshire OX25, 3QU
United Kingdom
Tel: +44 870 850 4417



BenQ

Talk to our experts at www.benq.eu/en-eu/business/projector/simulation-projectors.html

© 2025 BenQ Corporation. All rights reserved. Corporate names, trademarks & logos are the property of their respective companies. Specifications are subject to change without notice. Please contact your local BenQ office for the full BenQ products range.

Immersive & Simulation Projection Services

Customised immersive rooms with BenQ's one-stop solutions

Create the ultimate immersive experience with BenQ's projection services



Immersive entertainment

Innovation is our hallmark & our expertise shines in various creative applications

Projector experts at BenQ have the technical know-how required to help you choose the best solutions for your pro AV or simulation projects by offering a full tailor-made consultation service.

Projection Planning

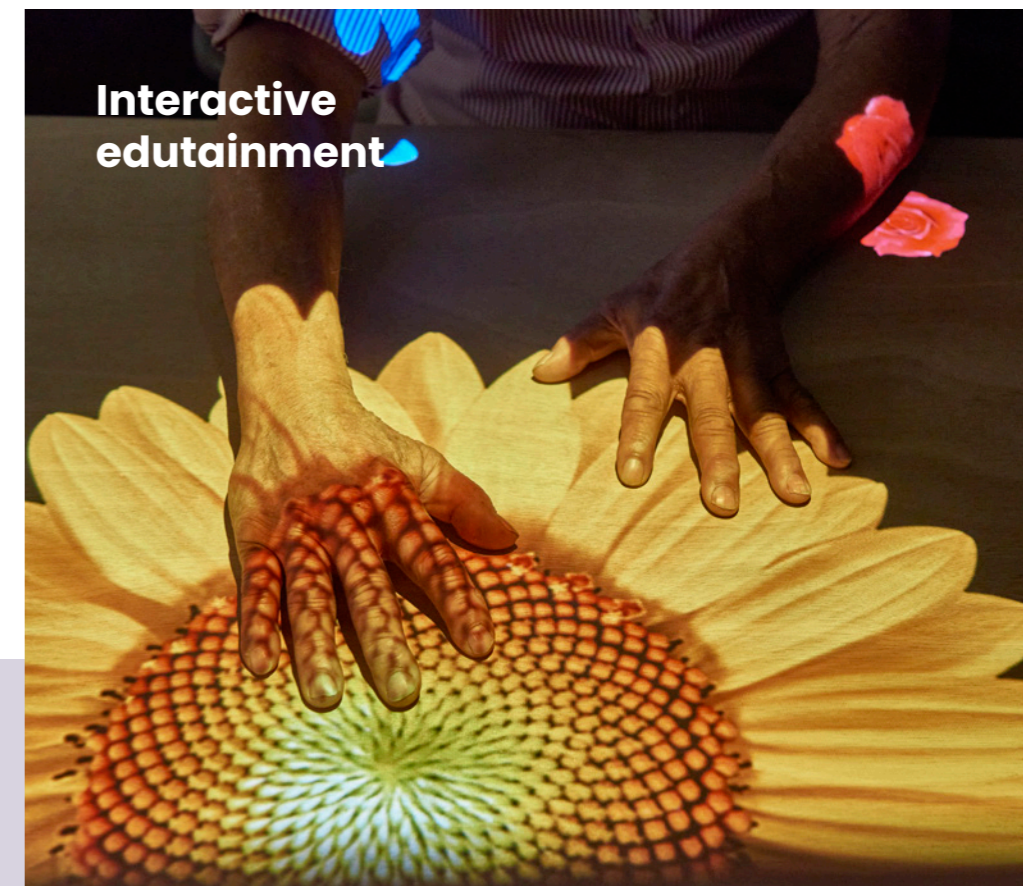
Our projection planning service includes 3D modelling of the projection in any scenario, using technical drawings to specify the appropriate projectors based on installation requirements.

Technical Consultation

After creating a 3D projection model, our expert advisors provide the most suitable projection solution for your space, ensuring all requirements are met.



Training simulation



Interactive edutainment

How the services work

1

Tell us your needs

Let us know what your AV or simulation project requirements are and our in-house projection experts will design a solution just for you.

2

Get a custom 3D model

Using technical drawings, we'll create a customised 3D modelled simulation proposal for any space. We'll also specify our recommended projectors based on your installation requirements.

3

Watch your vision become reality

Whether you're looking for multi-projector setups or edge blending, our network of trusted partners can help with your AV hardware and software installations.

Immersive entertainment

Convey the breathtaking splendour of your content with high-resolution and true-to-life visuals that capture spectators' attention and immerse them in the experience. While immersive projection is commonly used in museums and planetariums, it can also enhance the enjoyment of recreational sports and indoor entertainment by integrating interactive setups.

Combine technology and storytelling to turn your vision into a realm

Application: Immersive experience centre

To create a wonderfully immersive experience about artificial intelligence, the project needed short-throw projectors due to its limited projection space. With BenQ LU960ST2 short throw lens projectors, 360° projection immerses visitors in the future of AI.



Photo by Mike Bink

Key features



Fast mode



White balance adjustment in factory



Lens lock



Wide lens shift

Recommended products

	LU960ST2	LU960UST	LU960UST+	LH850ST	LK835ST
Brightness (ANSI Lumens)	5200	5200	5200	4000	4000
Throw Ratio	0.5	0.25	0.25	0.5	0.69 ~ 0.83
Native Resolution	WUXGA (1920 x 1200)	WUXGA (1920 x 1200)	WUXGA (1920 x 1200)	1080P (1920 x 1080)	4K UHD (3840 x 2160)
Projection Size	60" ~ 300"	100" ~ 150"	150" ~ 200"	90" ~ 240"	60" ~ 240"
Motorised Focus	✗	✗	✗	✓	✓
HDMI 2.0	✓	✓	✓	✓	✓
DisplayPort 1.2	✓	✓	✓	✗	✗
Fast Mode	8.33 ms, (@WUXGA 120Hz)	8.33 ms, (@WUXGA 120Hz)	8.33 ms, (@WUXGA 120Hz)	✗	✗
Lens Shift	V: ± 55% H: ± 23%	✗	✗	✗	✗
BenQ WBA Technology	✓	✓	✓	✓	✓
Lens Lock	✓	✗	✗	✗	✗
Product Weight	12 kg	12 kg	12 kg	5.1 kg	3.3 kg



THE ISSUE

A university college of applied sciences decided to build an experience centre to immerse its visitors in the world of artificial intelligence. The limited surface area, however, made it challenging to employ 360° projection.



THE SOLUTION

The system integrator was familiar with the BenQ LU960ST2, a 0.5 short-throw lens projectors with both horizontal and vertical lens-shift and knew BenQ as a reliable brand for technical support. The durability and outstanding image quality of BenQ laser projectors were other factors that led the system integrator to use them in the project.



THE RESULT

The impact of BenQ projectors was transformative. The 360° projection, combined with lights, sounds, and interactive displays, turned the project into a realm where technology and storytelling seamlessly meet.

Interactive edutainment

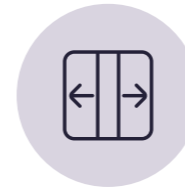
Showcase informative or interesting content with consistent images and interactivity that enhance experiences of elder care, occupational therapy, and collaborative learning. Interactive edutainment solutions are flexible in installation, suitable for floor, table, and ceiling projections, and can be seamlessly integrated into systems.

Simplify integration barriers and deliver truly immersive experiences

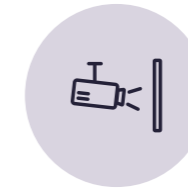
Application: School / Healthcare centre

Schools and healthcare centres are seeking innovative ways to inspire creativity and reduce anxiety while supporting professional staff without increasing their workload. BenQ projectors address these needs with their interactive functionality, ease of adjustment, and low maintenance requirements.

Key features



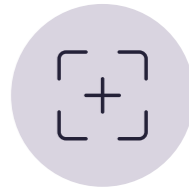
Screen fill adjustment



Short throw ratios



Auto 2D keystone correction



Motorised lens

Recommended products

	LH850ST	LH835ST	LH600ST+	LW600ST+
Brightness (ANSI Lumens)	4000	4000	3000	3200
Light Source	Laser	Laser	LED	LED
Throw Ratio	0.5	0.69 ~ 0.83	0.69 ~ 0.83	0.72 ~ 0.87
Native Resolution	1080P (1920 x 1080)	1080P (1920 x 1080)	1080P (1920 x 1080)	WXGA (1280 x 800)
Zoom & Focus	Motorised	Motorised	Manual	Manual
2D Keystone Correction	V & H: ± 30% (Manual)	V & H: ± 20% (Auto) V & H: ± 30% (Manual)	V & H: ± 20% (Auto) V & H: ± 30% (Manual)	V & H: ± 20% (Auto) V & H: ± 30% (Manual)
Corner Fit	✓	✓	✓	✓
Screen Fill	✓	✓	✓	✓



THE ISSUE

Projection is an ideal method for creating engaging experiences in schools and healthcare centres. However, limitations in projection distance and bright ambient lighting often result in images that are neither large nor vivid enough to captivate students and the elderly. Additionally, readjusting images when moving projectors between rooms can be cumbersome. Traditional lamp projectors pose maintenance challenges due to their shorter lifespans and lack of support for downward projection. Moreover, with regulations prohibiting mercury in projectors after 2027, SSI technology is becoming increasingly relevant.



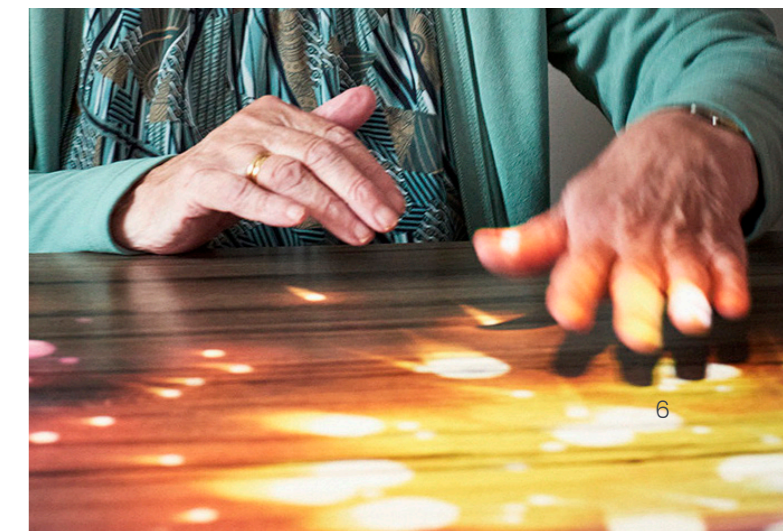
THE SOLUTION

BenQ projectors feature a short throw ratio that creates a 150" image at a height of 1.8m. The laser/LED light source delivers vivid images while preventing lamp degradation during downward projection and saves 30% power. Additionally, motorised zoom and focus functions allow users to easily adjust the image with a remote control, even after moving the projector between rooms.



THE RESULT

By simplifying the setup and offering customisable RS232 commands, BenQ projectors allow schools and healthcare centres to seamlessly integrate them into existing systems, fostering greater physical activity, social interaction, and mental stimulation for students or the elderly.



Training simulation

Recreate detail-rich, lifelike images with excellent contrast that produce sharp and vibrant colours. Advanced features in simulation projectors enable consistent, hassle-free operation with fewer interruptions. Training simulation solutions are suitable for applications such as flight, racing, and marine training scenarios.

Create an immersive and realistic environment for flight training

Application: Flight simulation

A major flight school installs new immersive flight simulators that incorporate advanced projection equipment.



THE ISSUE

The customer wanted to install new flight simulators to better train prospective pilots. They wanted technology that would create an immersive and realistic environment for flight training, and they needed it from a vendor that offered local after-sales support.



THE SOLUTION

Working together, BenQ and our flight simulator manufacturer partner, were able to overcome the issues the project faced. By pairing the partner's flight-simulator expertise with BenQ's leading projection technology, including 4K resolution and fast mode for a flawless and seamless realistic experience, as well as worldwide service, the customer received a simulator that met all their requirements.



THE RESULT

Thanks to high-resolution projection and seamless edge blending, the new flight simulator is incredibly immersive. Furthermore, the staff know that if the equipment requires maintenance or service, experienced BenQ technicians will be available to help.



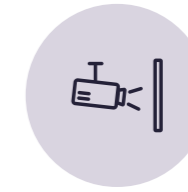
Key features



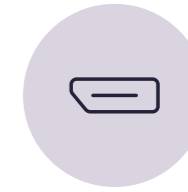
Low latency



High resolution



Short throw ratios



Display port



Simulator mode



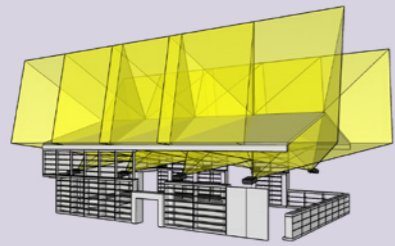
White balance adjustment in factory

Recommended products

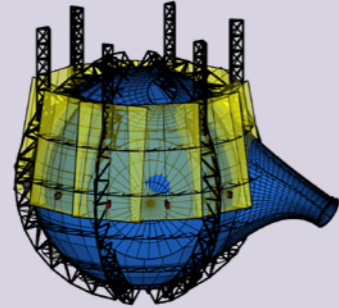
	LU960ST	LU960ST2	LK954ST	LK835ST
Brightness (ANSI Lumens)	5500	5200	5100	4000
Throw Ratio	0.77 ~ 0.84	0.5	0.81 ~ 0.89	0.69 ~ 0.83
Native Resolution	WUXGA (1920 x 1200)	WUXGA (1920 x 1200)	4K UHD (3840 x 2160)	4K UHD (3840 x 2160)
HDMI 2.0	✓	✓	✓	✓
DisplayPort 1.2	✓	✓	✓	✗
Fast Mode	8.33 ms (@WUXGA 120Hz)	8.33 ms (@WUXGA 120Hz)	16.7 ms (@4K 60Hz); 4.2ms (@1080p 240Hz)	✗
Lens Shift	V: ± 62% H: ± 24%	V: ± 55% H: ± 23%	V: ± 60% H: ± 23%	✗
BenQ WBA Technology	✓	✓	✓	✓
Simulator Mode*	✓	✓	✓	✗
Product Weight	12 kg	12 kg	7 kg	3.3 kg

*Simulator mode: Optimised settings for multiple projector blending purpose.

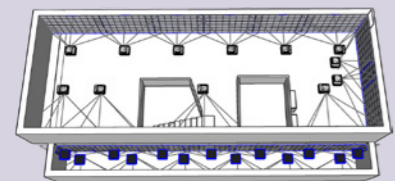
Professional planning for any immersive room



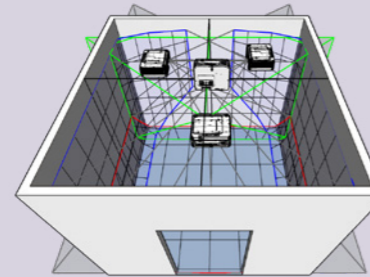
Ceiling projection



Dome projection

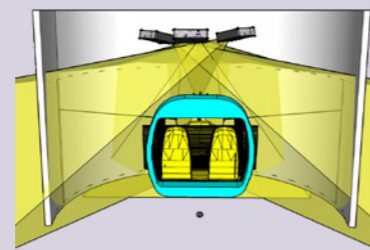


Immersive room



Immersive room

Immersive entertainment & training simulation



Flight simulator

From technical consultation to 3D planning of your projection ideas

Our projection planning service includes 3D modelling of the projection in any scenario, using technical drawings to specify the appropriate projectors based on installation requirements. After creating a 3D projection model, our expert advisors provide the most suitable projection solution for your space, ensuring all requirements are met.

Product specifications / Fixed-lens

	LU960 / LU960ST	LU960ST2	LU960UST / LU960UST+
			
Display			
Projection System	DLP Single 0.48"		
DMD type	DC3 DMD Chip		
Native Resolution	WUXGA (1920 x 1200)		
Brightness (ANSI Lumens)	5500	5200	5200
Contrast Ratio*	3,000,000:1		
Display Colour	1.07 Billion Colours		
Aspect Ratio	Native 16:10 (6 aspect ratio selectable)		
Light Source	Laser		
Light Source life** (Normal / Eco / Dimming)	20,000 / 38,000 / 70,000 hours		
Optical			
Throw Ratio	1.127 ~ 1.697 (LU960) 0.77 ~ 0.84 (LU960ST)	0.5 (Exclusive!)	0.25
Zoom Ratio	1.5x (LU960) 1.1x (LU960ST)	Fixed	-
Lens Shift	Vertical: ± 62%, Horizontal: ± 24%	Vertical: ± 55%, Horizontal: ± 23%	Digital lens shift (Vertical: ± 5% @1080P)
Keystone Correction	Vertical & Horizontal: ± 30 degrees		
Projection Offset	0	0	122%
Projection Size	30" ~ 300"	60" ~ 300"	100" ~ 150" (LU960UST) 150" ~ 200" (LU960UST+) (Exclusive!)
Connectivity			
I/O Interface	PC in (D-sub 15pin), Monitor out (D-sub 15pin), HDMI in (2.0/HDCP 2.2), Monitor out (HDMI), Display Port, LAN (RJ45), HDBaseT, 3D sync in & out, USB-A (5V/1.5A), USB-B (service), RS232 in (DB-9pin), Wired Remote in, Audio in & out (3.5mm Mini Jack), IR Receiver		
Special Feature			
Security	Security Bar, Kensington anti-theft lock slot		
Features	Rec.709 92%, 360 Degree and Portrait Projection, Dust Proof Engine, 24/7 Hours Operating, Fast Mode, Factory WBA Calibration, FW upgrade via LAN; Lens lock ring (LU960/LU960ST/LU960ST2)		
Compatibility			
Resolution Support	VGA (640 x 480) to 4K UHD (3840 x 2160)		
Power			
Power Consumptions (Max / Normal / Eco)	550W / 450W / 350W		500W / 450W / 339W
Standby Power consumption	Normal < 0.5W, Network < 2W		
Power Supply	100 ~ 240V AC		
Dimension and Weight			
Product Dimensions (W x H x D)	479.6 x 182.8 x 402 mm		480 x 157.4 x 473 mm
Product Weight	12 kg		
Operation Condition			
Noise Level (Normal / Eco)	37 / 35dBA		
Operating Temperature	0 ~ 40°C		
OSD			
On Screen Display Language	Arabic / Bulgarian / Croatian / Czech / Danish / Dutch / English / Finnish / French / German / Greek / Hindi / Hungarian / Italian / Indonesian / Japanese / Korean / Norwegian / Polish / Portuguese / Romanian / Russian / Simplified Chinese / Spanish / Swedish / Turkish / Thai / Traditional Chinese (28 Languages)		




* The Contrast is measured by Full On Full Off standard.

** Light Source Life results will vary depending on environmental conditions & usage.

Product specifications / **Fixed-lens**

	LK954ST	LU935ST	LH850ST New!
			
Display			
Projection System	DLP Single 0.47"	DLP Single 0.48"	DLP Single 0.65"
DMD type	DC3 DMD Chip		
Native Resolution	4K UHD (3840 x 2160)	WUXGA (1920 x 1200)	1080P (1920 x 1080)
Brightness (ANSI Lumens)	5100	5500	4000
Contrast Ratio*	3,000,000:1		
Display Colour	1.07 Billion Colours		
Aspect Ratio (5 aspect ratio selectable)	Native 16:9	Native 16:10	Native 16:9
Light Source	Laser		
Light Source life** (Normal / Eco)	20,000 hours		20,000 / 30,000 hours
Optical			
Throw Ratio	0.81 ~ 0.89		0.499
Zoom Ratio	1.1x		Fixed
Lens Shift	Vertical: ± 60%, Horizontal: ± 23%		
Keystone Correction	Vertical, Horizontal & Rotation: ± 40 degrees	Vertical & Horizontal: ± 30 degrees	Vertical & Horizontal: ± 30 degrees
Projection Size	30" ~ 300"		90" ~ 240"
Connectivity			
I/O Interface	HDMI in (2.0/ HDCP 2.2), Display Port, LAN (RJ45), HDBaseT, 3D sync in & out (VESA), USB-A (5V/2A), RS232 in (DB-9pin), Wired Remote in & out (3.5mm Mini Jack), Audio out (3.5mm Mini Jack)	PC in (D-sub 15pin), Monitor out (D-sub 15pin), DMI in (2.0/ HDCP 2.2), LAN (RJ45), HDBaseT, 3D sync in & out, USB-A (5V/1.5A), RS232 in (DB-9pin), Wired Remote in (3.5mm Mini Jack), Audio in & out (3.5mm Mini Jack)	USB Type B (for Service), LAN (RJ45), HDMI in (2.0/ HDCP 1.4/2.2), Audio out (3.5mm Mini Jack), RS232 in (DB-9in), USB-A (5V/1.5A)
Special Feature			
Security	Security Bar, Kensington anti-theft lock slot		Kensington anti-theft lock slot
Feature	Large Lens Shift, Projector/ Remote Control ID Setting, HDBaseT, S/PDIF, 360-degree Projection, Portrait, 3D Sync In and Out, White Balance Adjustment, Fast Mode; 4K Upscaling (LK954ST)		2D Keystone and Corner Fit, Screen Fill Hot Key, Default Simulation Mode, Wi-Fi Solution, White Balance Adjustment
Compatibility			
Resolution Support	VGA (640 x 480) to 4K UHD (3840 x 2160)		
Power			
Power Consumptions (Max / Normal / Eco)	495W / 440W / 315W		300W / 250W / 200W
Standby Power consumption	Normal < 0.5W, Network < 2W		
Power Supply	100 ~ 240V AC		
Dimension and Weight			
Product Dimensions (W x H x D)	416 x 166 x 351 mm		320 x 130.6 x 256.9 mm
Product Weight	7 kg		5.1 kg
Operation Condition			
Noise Level (Normal / Eco)	40 / 33 dBA	39 / 32 dBA	39 / 32 dBA
Operating Temperature	0 ~ 40°C		
OSD			
On Screen Display Language	Arabic / Bulgarian / Croatian / Czech / Danish / Dutch / English / Finnish / French / German / Greek / Hindi / Hungarian / Indonesian / Italian / Japanese / Korean / Norwegian / Persian / Polish / Portuguese / Romanian / Russian / Simplified Chinese / Spanish / Swedish / Thai / Traditional Chinese / Turkish / Vietnamese (30 languages)		


Product specifications / **Fixed-lens**

	LH835ST New!	LK835ST New!	LH600ST + / LW600ST+
			
Display			
Projection System	DLP Single 0.65"		
DMD type	DC3 DMD Chip		
Native Resolution	1080P (1920 x 1080)	4K UHD (3840 x 2160)	1080P (1920 x 1080) (LH600ST+) WXGA (1280 x 800) (LW600ST+)
Brightness (ANSI Lumens)	4000		3000 (LH600ST+) 3200 (LW600ST+)
Contrast Ratio*	3,000,000:1		20,000:1
Display Colour	1.07 Billion Colours		
Aspect Ratio (5 aspect ratio selectable)	Native 16:9		Native 16:9 (LH600ST+) Native 16:10 (LW600ST+)
Light Source	Laser		LED
Light Source life** (Normal / Eco)	20,000 / 30,000 hours		
Optical			
Throw Ratio	0.69 ~ 0.83 (95" ± 3% @ 1.44m)		0.69 ~ 0.83 (LH600ST+) 0.72 ~ 0.87 (LW600ST+)
Zoom Ratio	1.2x		
Keystone Correction	Vertical & Horizontal: ± 20%	Vertical & Horizontal: ± 30%	Vertical & Horizontal: ± 30%
Projection Offset	102.5% ± 2.5%		100% ± 2.5%
Projection Size	60" ~ 240"		60" ~ 200"
Connectivity			
I/O Interface	HDMI in (2.0/ HDCP 1.4/2.2), USB Type C (Input DP (Display) ALT Mode and DC 5V/1A Out), USB Type A (5V/1.5A), USB Type A (Wi-Fi Dongle), RS232 In (D-sub 9pin, male), Audio out (3.5mm Mini Jack), IR Receiver		HDMI in (1.4/ HDCP 1.4), USB Type A (5V/1.5A), USB Type A (Wi-Fi Dongle), RS232 In (D-sub 9pin, male), Audio out (3.5mm Mini Jack)
Audio			
Built-in Speaker	1 x 10W		
Special Feature			
Security	Kensington Security Bar		
Feature	Auto Screen Fit, Quick Focus, 2D Keystone and Corner Fit, Golf Mode, Wi-Fi Solution, Screen Fill		
Compatibility			
Resolution Support	VGA (640 x 480) to 4K UHD (3840 x 2160)		VGA (640 x 480) to WUXGA_RB (1920 x 1200) *RB-Reduced Blanking"
Power			
Power Consumptions (Max / Normal / Eco)	320W / 192W / 136W		215W (Normal) / 130W (Eco)
Standby Power consumption	Normal < 0.5W		
Power Supply	100 ~ 240V AC		
Dimension and Weight			
Product Dimensions (W x H x D)	303.5 x 234.5 x 112.4 mm	303.5 x 224.7 x 112.4 mm	303.5 x 107.4 x 220.7 mm
Product Weight	3.3 kg		2.65 kg
Operation Condition			
Noise Level (Normal/Eco)	32 / 29 dBA	34 / 28 dBA	34 / 28 dBA
Operating Temperature	0 ~ 40°C		
OSD			
On Screen Display Language	Bulgarian / Croatian / Czech / Danish / Dutch / English / Finnish / French / German / Greek / Hindi / Hungarian / Italian / Japanese / Korean / Norwegian / Polish / Portuguese / Romanian / Simplified Chinese / Spanish / Swedish / Traditional Chinese (23 Languages)		Arabic / Bulgarian / Croatian / Czech / Danish / Dutch / English / Finnish / French / German / Greek / Hindi / Hungarian / Indonesian / Italian / Japanese / Korean / Norwegian / Polish / Portuguese / Romanian / Russian / Simplified Chinese / Spanish / Swedish / Thai / Turkish / Traditional Chinese (28 languages)

* The Contrast is measured by Full On Full Off standard.

** Light Source Life results will vary depending on environmental conditions & usage.

Product specifications / Interchangeable-lens

LU9800	
	
Display	
Projection System	DLP 0.67"
DMD type	DC3 DMD Chip
Native Resolution	WUXGA (1920 x 1200)
Brightness (ANSI Lumens)	10000
Contrast Ratio*	3,000,000:1
Display Colour	1.07 Billion Colours
Aspect Ratio	Native 16:10 (9 aspect ratio selectable)
Light Source	Laser
Light Source life** (Bright / Eco / Dimming)	20,000 / 38,000 / 70,000 hours
Optical (The values below are measured with the Standard Lens. For optional lenses, please refer to the table on p.14.)	
Throw Ratio	1.54 ~ 1.93
Zoom Ratio	1.25x
Lens Shift	Vertical: - 15% ~ 55%, Horizontal: -5% ~ +5%
Keystone Correction	Vertical & Horizontal: ± 30%
Projection Size	50" ~ 500"
Connectivity	
I/O Interface	PC in 1 (D-sub 15pin), PC in 2 (5BNC, R/G/B/H/V), Monitor out (D-sub 15pin), HDMI (2.0/HDCP 2.2), DVI-D in, LAN (RJ45), RS232 in, HDBaseT, RS232 out, Trigger, 3D sync in & out, Wired Remote in & out, USB-B (service), USB-A (5V/2A), Audio in (3.5mm Mini Jack), Audio L/R out (RCA), IR Receiver
Special Feature	
Security	Security Bar, Power Cord Lock
Feature	Factory WBA Calibration, Motorised Lens Shift/ Zoom/ Focus, Lens Memory, 360 Degree & Portrait Projection, 2D Keystone & Corner Fit, Constant brightness, Custom Light Mode, Sealed Engine, Direct Power On
Compatibility	
Resolution Support	VGA (640 x 480) to 4K UHD (3840 x 2160)
Power	
Power Consumptions (Normal)	885W (Max) / 792W (Typical)
Standby Power consumption	Normal < 0.5W, Network < 6W
Power Supply	100 ~ 240V AC
Dimension and Weight	
Product Dimensions (W x H x D)	500 x 211 x 587.3 mm
Product Weight	26.8 kg (lens excluded)
Operation Condition	
Noise Level (Normal / Eco)	42 / 38 dB
Operating Temperature	0 ~ 45°C
OSD	
On Screen Display Language	English / French / German / Italian / Japanese / Korean / Portuguese / Russian / Simplified Chinese / Spanish / Swedish / Traditional Chinese (12 Languages)

Product specifications / Optional lens

Resolution: WUXGA		Throw Ratio	Zoom Ratio	Lens Shift
LS1ST4 Ultra Short Throw (5J.JCY37.001)		0.377	Fixed	Vertical: -3% ~ 7%, Horizontal: ± 5% (WUXGA Centre at offset 56.5%)
LS1ST3A Short Throw (5J.JPN37.001)		0.77 ~ 1.1	1.42x	Vertical: - 15% ~ 55%, Horizontal: ± 5%
LS1ST2A Wide Zoom 2 (5J.JPN37.002)		1.1 ~ 1.3	1.18x	
LS1ST1A Wide Zoom 1 (5J.JPN37.003)		1.25 ~ 1.6	1.28x	
LS1SDA Standard (5J.JPN37.004)		1.54 ~ 1.93	1.25x	Vertical: 0 ~ 50%, Horizontal: ± 10%
LS1LT1 Semi Long 1 (5J.JAM37.051)		2.22 ~ 3.67	1.65x	
LS1LT2 Long Zoom 1 (5J.JAM37.031)		3.58 ~ 5.38	1.5x	
LS1LT3 Long Zoom 2 (5J.JAM37.041)		5.31 ~ 8.26	1.55x	

* The Contrast is measured by Full On Full Off standard.

** Light Source Life results will vary depending on environmental conditions & usage.