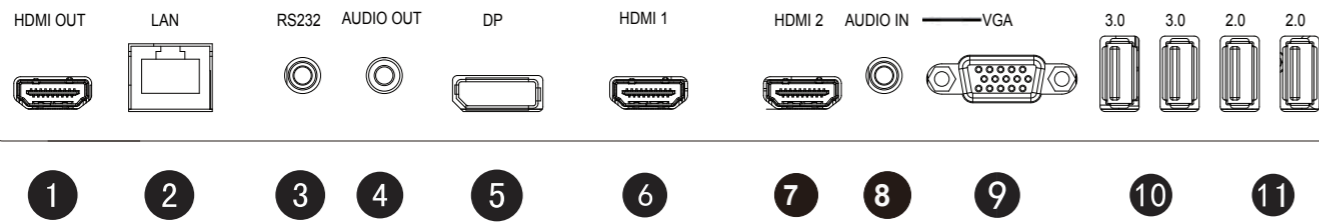


## Input and Output Terminals



No.	Name	Description
1	HDMI OUT	Connects to display devices with an HDMI input.
2	LAN	10/100 LAN interface, connecting RJ45 terminals.
3	RS232	Serial interface, used for mutual transfer of data between devices.
4	AUDIO OUT	Connects to an external audio device (such as a speaker, stereo system, or headphone) to output the audio that is supplied by the video source.
5	DP	Connect a video source to a display device.
6	HDMI 1	Receive 4K2K 60Hz supported signals from an external device.
7	HDMI 2	Receive 4K2K 60Hz supported signals from an external device.
8	AUDIO IN	Receives audio signals from an external device.
9	VGA	Receive analog RGB signals from an external device (such as a computer).
10	2.0	Access multimedia files on USB drives directly.
11	3.0	Access multimedia files on USB drives directly.



## World's First Pantone Validated Digital Signage

Professional Display Solution for Optimum Color Performance

BenQ Europe B.V.  
Meerenakkerweg 1-17,  
5652 AR Eindhoven,  
The Netherlands  
Tel : +31-88-888-9200  
Fax : +31-88-888-9299

BenQ Austria GmbH  
Central & Eastern Europe  
Altmannsdorfer Strasse 89 Top 6  
1120 Vienna  
Austria  
Tel : +43-1-38-00-300  
Fax : +43-1-38-00-399

BenQ Deutschland GmbH  
Essener Straße 5  
46047 Oberhausen  
Germany  
Tel : +49-208-409-42-0  
Fax : +49-208-409-42-99

BenQ Deutschland GmbH  
Niederlassung Österreich  
Wehlstraße 27b / Stg. 2 / Top 5  
1200 Vienna  
Austria  
Tel : +43-190-7276-0

BenQ Deutschland GmbH  
Zweigniederlassung Baden  
Tafelstrasse 32  
5045 Baden-Dättwil  
Switzerland  
Tel : +41-44-74399-99  
Fax : +41-44-74399-00

BenQ Benelux B.V.  
Meerenakkerweg 1-17,  
5652 AR Eindhoven,  
The Netherlands  
Tel : +31-88-888-9200  
Fax : +31-88-888-9299

BenQ Nordic AB  
Mättbandsvägen 12  
Box 7101  
S-187 12 Täby  
Sweden  
Tel: +46-8-588-98-800  
Fax: +46-8-588-98-899

BenQ UK Ltd.  
3 Staplehurst Office Centre,  
Weston-on-the-Green,  
Bicester Oxfordshire OX25  
3QU  
United Kingdom  
Tel: +44-870-850-4417  
Fax: +44-870-850-4418

BenQ Italy s.r.l.  
Via La Spezia, 1  
20142 Milano  
Italy  
Tel : +39-02-89879-790

BenQ France SAS  
La Boursidière  
RN186 92357  
Le Plessis-Robinson  
France  
Tel: +33-0-1-7037-1717  
Fax : +33-0-1-7037-1799

BenQ Technology Iberica S.L.U.  
Calle Constitucion, 3 (2-1)  
08960 Sant Just Desvern  
Spain  
Tel : +34-93-556-0800  
Fax : +34-93-556-0899

BenQ Europe B.V.  
Representative Office in Russia  
Park Place Moscow, 113/1  
Leninsky, Prospekt B-101,  
117198 Moscow  
Russia  
Tel : +7-095-937-8532  
Fax : +7-095-626-5196

business-display.benq.eu

© Copyright 2019 BenQ Corporation. All rights reserved. Corporate names and trademarks are the property of their respective companies. Specifications subject to change without notice. Please contact your local BenQ office for the full BenQ product range.

# BenQ

## BenQ Smart Signage Series



# BenQ

# A HIGHLY RELIABLE AND VERSATILE SMART SIGNAGE

## The All-in-One Smart Solution for All Businesses

SL6502K is the total package suitable for businesses of all kinds. Being the world's first digital signage to achieve Pantone Validated status, SL6502K assures on-screen color fidelity and matched interoperability with Pantone-qualified color production devices. SL6502K offers additional color adjustment flexibility with its fine-tuned custom color modes, fulfilling the needs of professional designers for different types of artwork. The stunning 4K UHD resolution delivers breathtaking visuals to captivate customers. The powerful X-Sign software facilitates effortless content creation and management, while the DMS application guarantees hassle-free display control. To further streamline the day-to-day operation for businesses, SL6502K offers the all-in-one, clutter-free solution that fits perfectly into most neatly organized spaces. Empowered by the highly reliable PID, SL6502K is designed to meet the highest standard to ensure optimal, nonstop operation. SL6502K is the solution that saves you time, efforts and resources all at once.



## Excellent, Durable Display Performance



### Pantone Mode

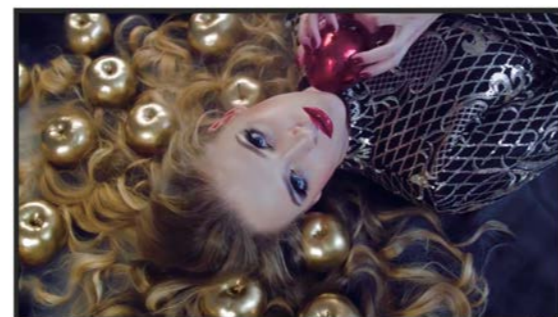
As the world's first PANTONE validated digital signage, BenQ SL6502K offers a certified color fidelity, fulfilling the absolute consistency and precision that designers need. BenQ Pantone Mode provides an end-to-end solution from design and production via monitors to in-store deployment and broadcast via digital signages for retail display integrators, fashion trendmakers, product brands, and design studios who trust the Pantone system to deliver accurate color production.

### Flexible Color Adjustment for Different Modes

In addition to offering Pantone validated color fidelity, SL6502K features additional color adjustment flexibility with exclusive Cinema, Photo, and M-Book modes. Fine-tuned to accentuate spellbinding motion video, vibrant still images, and precision design work, these custom modes help to create impactful content and deliver engaging interactions.

### Cinema Mode

In Cinema mode, BenQ SL6502K subtly showcases the images displayed in high-contrast, added depth and dimension, and with vibrant and saturated colors even for motion pictures. Images on the smart panels will become the eye-catcher to captivate your customers in no time.



### Photo Mode

The still images displayed in BenQ SL6502K's Photo mode deliver saturated, vibrant colors in detail to showcase the delicacy of your products from any angle. The precise color performance without distortion of BenQ Smart Signage can be very useful for designers to make your products more attractive and boost sales.



BenQ SL6502K



Other Displays

### M-Book Mode

As the majority of designers use MacBook or iMac to create their artwork, BenQ exclusive M-Book mode showcases the images displayed on the digital signage close to the one on your M-book. This ensures the original piece of work is similarly represented as intended.



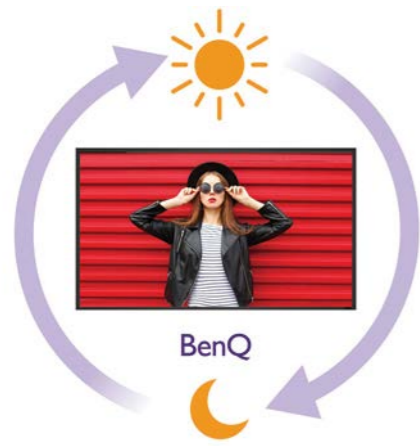
### 4K2K UHD Unparalleled Clarity

An ultra-high definition resolution of 4K2K (3840 x 2160) offers not only the most exquisite image details for an optimal viewing experience but also four times more information and workspace than a 1080p full HD display, enhancing your efficiency and productivity.



### Powerful Performance & Drive

The combination of 32GB system storage and 4GB RAM memory ensures delivery of smooth, seamless display performance at all times, even while the smart signage is multitasking between applications.



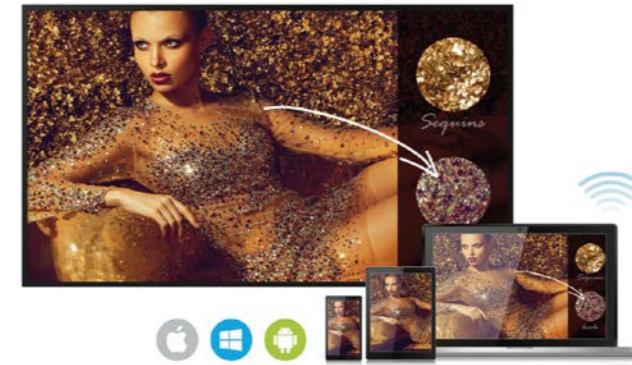
## 24/7 Non-stop Operation

An amazing life of 50,000 hours translates to years of non-stop display service and reliable industrial-class performance far more economical than consumer models. Built with better cooling techniques reaching longer runtimes of up to 24 hours a day that is safer and more reliable.



## Flawless Display in Portrait and Landscape View

Unlike anything else available on the market, BenQ Smart Signage displays are built to ensure flawless portrait and landscape view. This choice between vertical and horizontal installation greatly increases flexibility when operators are designing and arranging their stores.



## Wireless Solution for Seamless Collaboration

InstaShare is the software designed for seamless wireless presentation and collaboration during lectures. It allows the smooth streaming of visual, audio files and Full HD quality videos. Users can also mirror content from mobile devices, and invite up to 16 participants for seamless collaboration.

## All-in-One, Clutter Free Solution



### Android Built-In

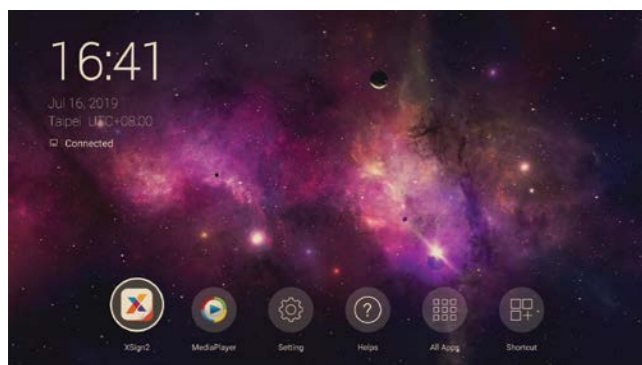
Built-in Android means that the BenQ SL6502K is ready to work as soon as operators plug it in. There's no need to hook it up to a PC or other device to serve content, and embedded speakers provide for SL6502K's audio needs. With no cables to hide, the all-in-one SL6502K fits neatly on shelves and reduces clutter.

### USB Plug & Play

SL6502K's plug-and-play simplicity enables you to access and play multimedia files directly from a USB flash drive. Requiring no PC connection or complicated cable setup, SL6502K ensures a holistic shopping experience with the most hassle-free installation.

### Set Up Quickly with BenQ Launcher

Created to aggregate all key tools in one hub, BenQ Launcher provides users useful information including time, internet status, system upgrade reminder, and allows users to access video input sources or finish all the settings without efforts. Furthermore, new users may scan the QR code provided to quickly download the user manual on their smart device. Users can also use the X-Sign software to utilize further applications on the display. Additionally, BenQ Launcher comes with a task switcher, letting users switch between recent apps and input signal sources.



## Easy to Install



### Lightweight Design

Our smart signage displays can be easily mounted or rearranged to suit diverse uses, which saves you plenty of costs and manpower on signage installation, and eventually facilitates different display configurations in stores, offices, and other commercial establishments.

### Slim & Stylish Design

A narrow bezel and slim design boasts a stylish outlook befitting any in-store environment, whether it's a trendy café or a sophisticated boutique store.

## Integrated X-Sign 2.0 Software with Smart Signage Content Templates



### X-Sign Designer

BenQ's X-Sign 2.0 takes the hassle out of designing signage content. Included with SL6502K, BenQ's exclusive X-Sign software provides content templates, making it easy for operators to quickly design and roll out new promotional material. The templates also let operators add images, videos, and scrolling text to their marketing materials. The long-size templates let operators create marketing content easily while the ability to enrich materials with media content will boost the store's bottom line.



### Instant Price Updates

Updating prices and other fluctuating content is easy. Operators just need to modify a centralized .csv file in the cloud.



### Real Time Messages

X-Sign lets operators push real-time messages to the display network to create instant excitement.



### Broadcast YouTube Live Streaming across Multiple Displays

With X-Sign, operators can insert live YouTube broadcasts of product launches on Smart Signage in real time, which makes promoting new products instant and easy.



### QR Code Interaction and Analysis

X-Sign allows operators to embed QR Codes that, when scanned, can offer customers the latest promotional information. X-Sign also offers QR Code analysis to let operators see when and where customers are interacting with content. This analysis can help operators quickly adjust their offers to match customer interest.

### Centralized Remote Display Management

X-Sign's intuitive interface makes it easy for operators to monitor and manage all remote displays from a central, off-site location. With X-Sign, operators can keep tabs on display performance in real-time and receive instant alerts about any issues. Loaded with functionality, X-Sign also allows operators to see what content is playing on each display, manage updates, restart displays, and manage screen on/off and volume settings.



## Hassle-Free Display Management

With cloud features, BenQ DMS combined Device Info and Management, Apps Management and OTA (Over-the-Air) Update to provide you an ultimate device management solution for your productivity.



### Device Info and Management

Remotely control your displays with DMS Cloud via Internet. It's an effective way to lower TCO and energy consumption for your operation.



### Apps Management

Install Android™ apps for a selection of displays through our cloud server. DMS Cloud is designed to save you the hassles of repetitive manual installation work.



### OTA (Over-the-Air) Update

Upgrade the latest BenQ firmware for your displays through our OTA Update support and keep them running smoothly at all times.

## More Features

### DMS Local

DMS Local is a Device Info and Management software based on windows OS. For users who would like to control your displays remotely via LAN, you can download DMS Local software for your operation.

### MDA (Multiple Display Administrator)

For users who would like to control your displays remotely via RS232, you can download MDA software for your operation.

## Specifications

<b>Panel</b>	Screen Size	65"		
	Resolution	3840 x 2160		
	Brightness (Typ.)	500		
	Contrast Ratio (Typ.)	1200 : 1		
	Viewing Angle (H/V)	178 / 178		
	Response Time (G-t-G)	8 ms		
	Backlight Life (hrs)	50,000		
	Panel Surface	Anti-Glare		
	Operating Hour	24 / 7		
	Orientation	Landscape / Portrait		
<b>Power</b>	Type	Internal		
	Power Supply	100V~240V, 50 Hz / 60 Hz		
	Power Consumption	Maximum (W/h)	270W	
		Typical (W/h)	225W	
		Standby Mode (W/h)	≤0.5W	
		Off Mode (W/h)	0W	
	AC Power Switch	Yes		
Wake up	HDMI / VGA / DP			
<b>Environment</b>	Operation Temperature	0°C ~ 40°C		
	Operating Humidity	20% ~ 80% RH non-condensing		
<b>Connectivity</b>	Input	VGA	x 1	
		HDMI	HDMI 2.0 x 2	
		Display Port	DP 1.2 x 1	
		Audio Input	x 1 (3.5 mm)	
		Audio Output	x 1 (3.5 mm)	
	USB	USB 3.0 x 2 / USB 2.0 x 2		
	RS232	Yes		
	RJ45	Yes		
	Remote Controller	Yes		
	<b>Audio</b>	Internal Speaker	10W x 2	
<b>Mechanical</b>	Dimension (mm)	Screen	1454.6 x 829.6 x 72.0	
		Package	1660 x 1045 x 245	
	Weight (kg)	Screen	35,5	
		Package	48	
	Bezel Width (mm)	12,6		
Wall Mounting (VESA) (Screw Type /Max. Length)	400 x 400 mm M8 x 20L			

## Dimension (mm)

